

Design studio 3

Final album

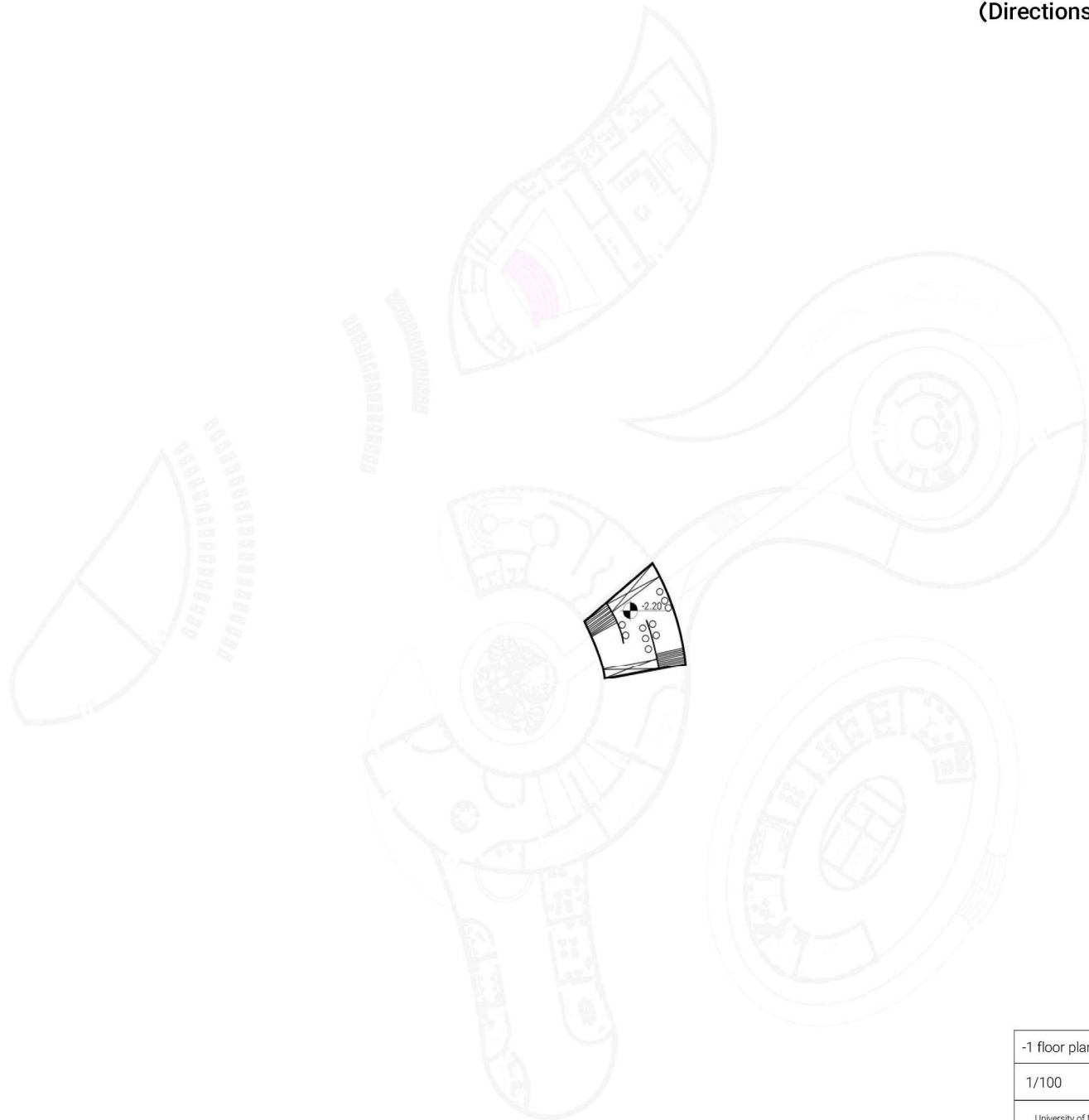
Prof. Dr.Qolipour, Remezan pour


Stu. Ashkan Khodaverdi



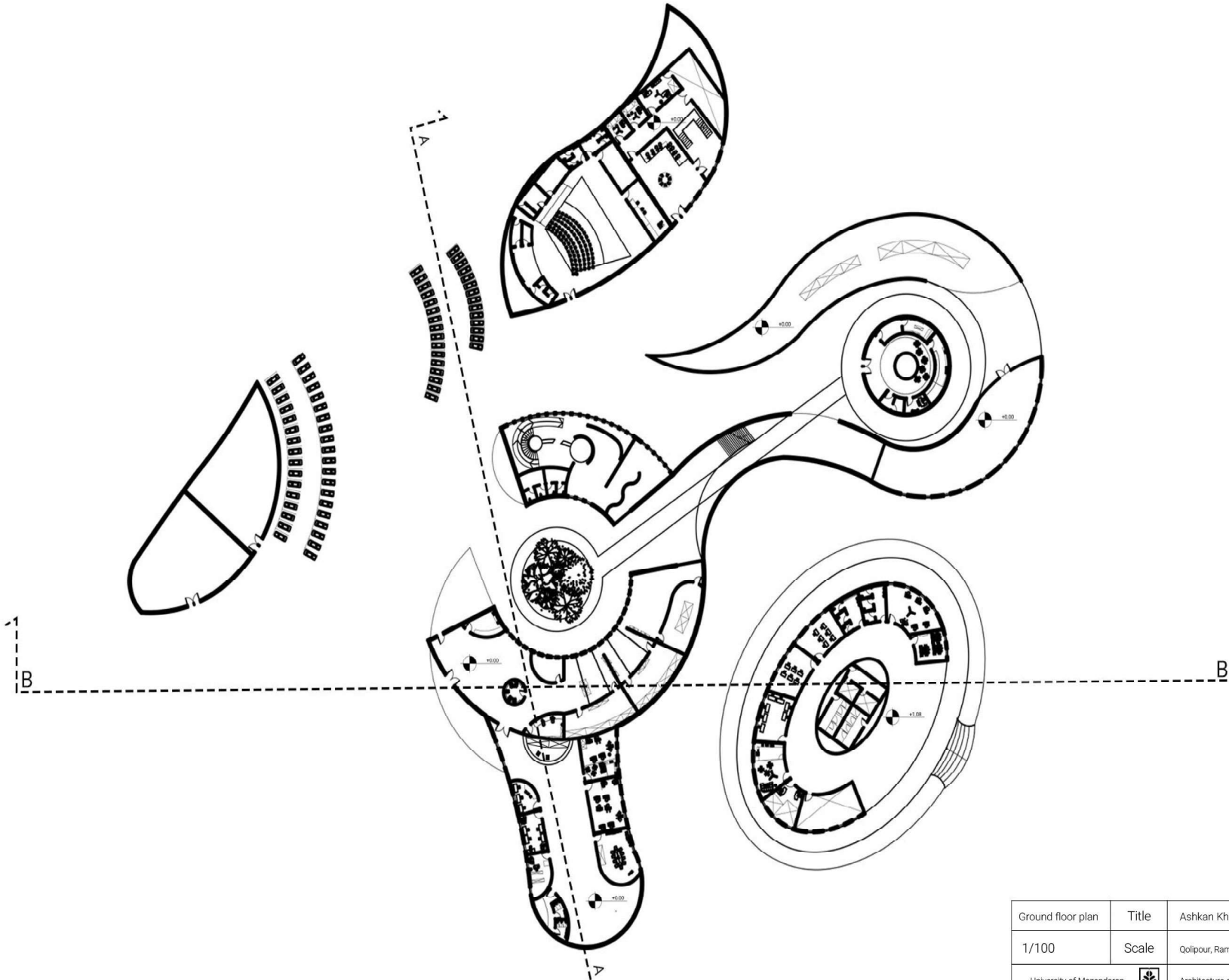
University of
Mazandaran


-1 floor plan
(Directions shown)



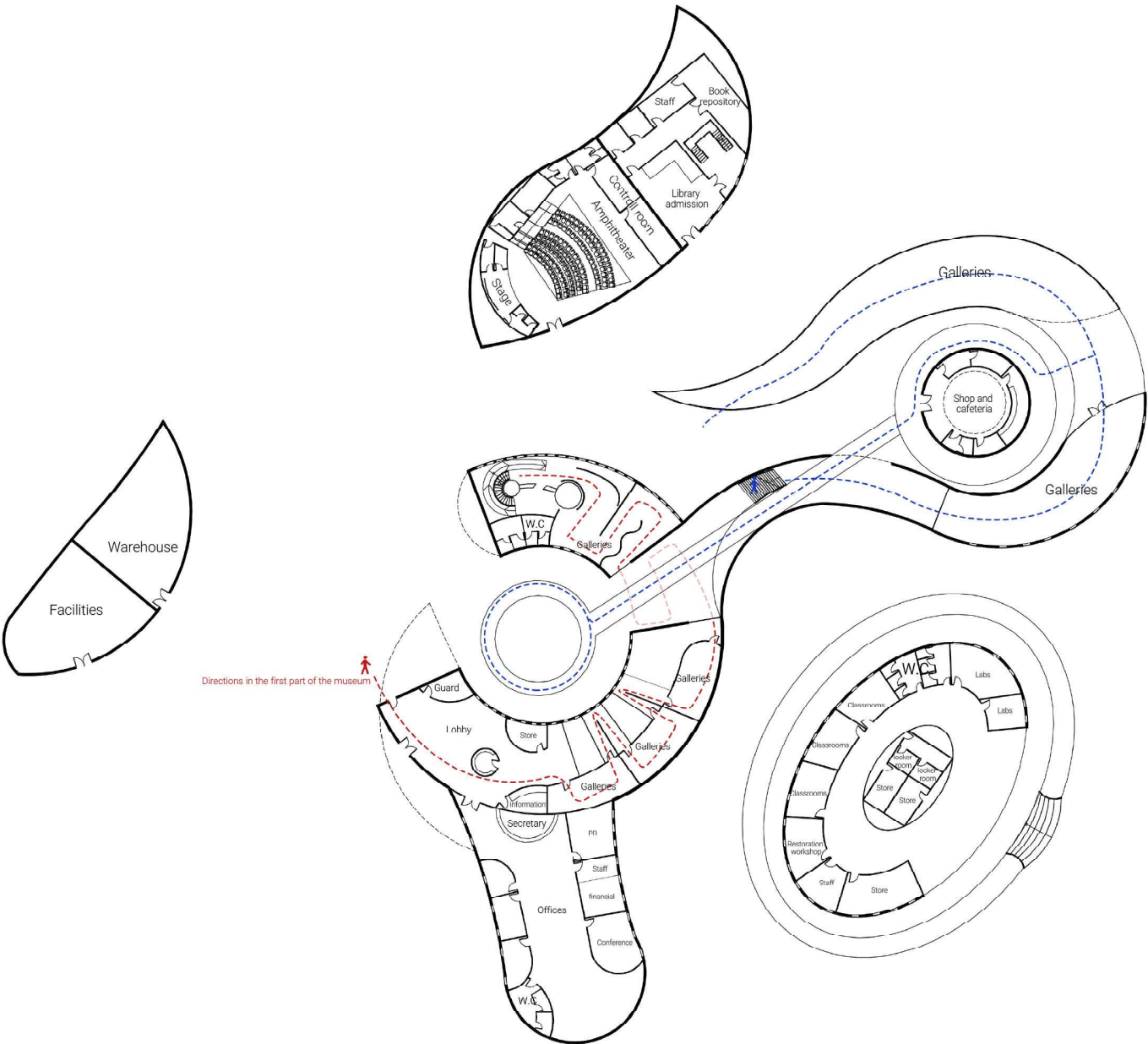
-1 floor plan	Title	Ashkan Khodaverdi	stu.
1/100	Scale	Qolipour, Ramezanzpour	Prof.(s)
University of Mazandaran		Architecture design 3	

Ground floor plan

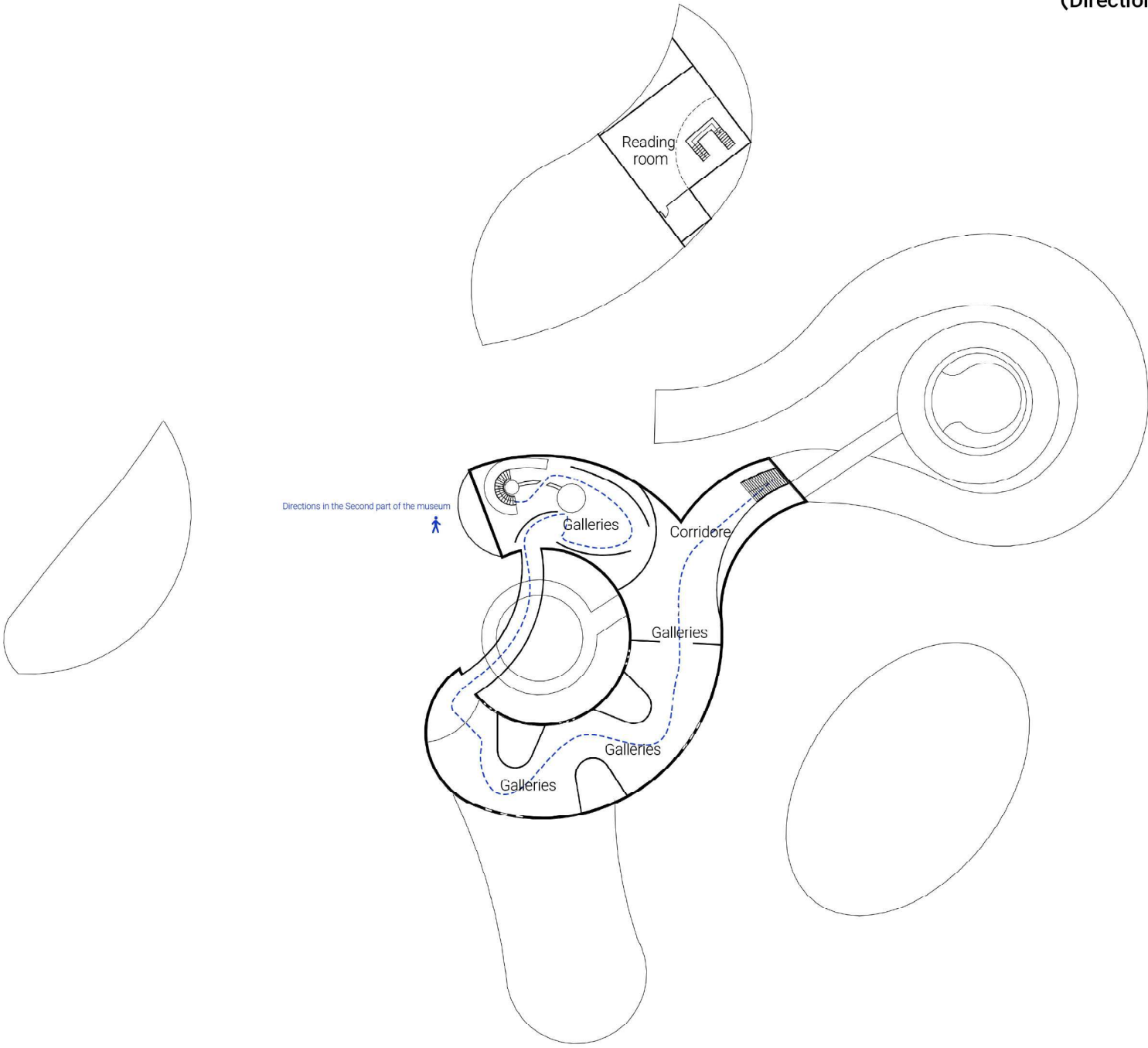


Ground floor plan	Title	Ashkan Khodaverdi	stu.
1/100	Scale	Qolipour, Ramezanpour	Prof.(s)
University of Mazandaran		Architecture design 3	

Ground floor plan
(Directions shown)



First floor plan
(Directions shown)



Reading room

Galleries

Corridore

Galleries

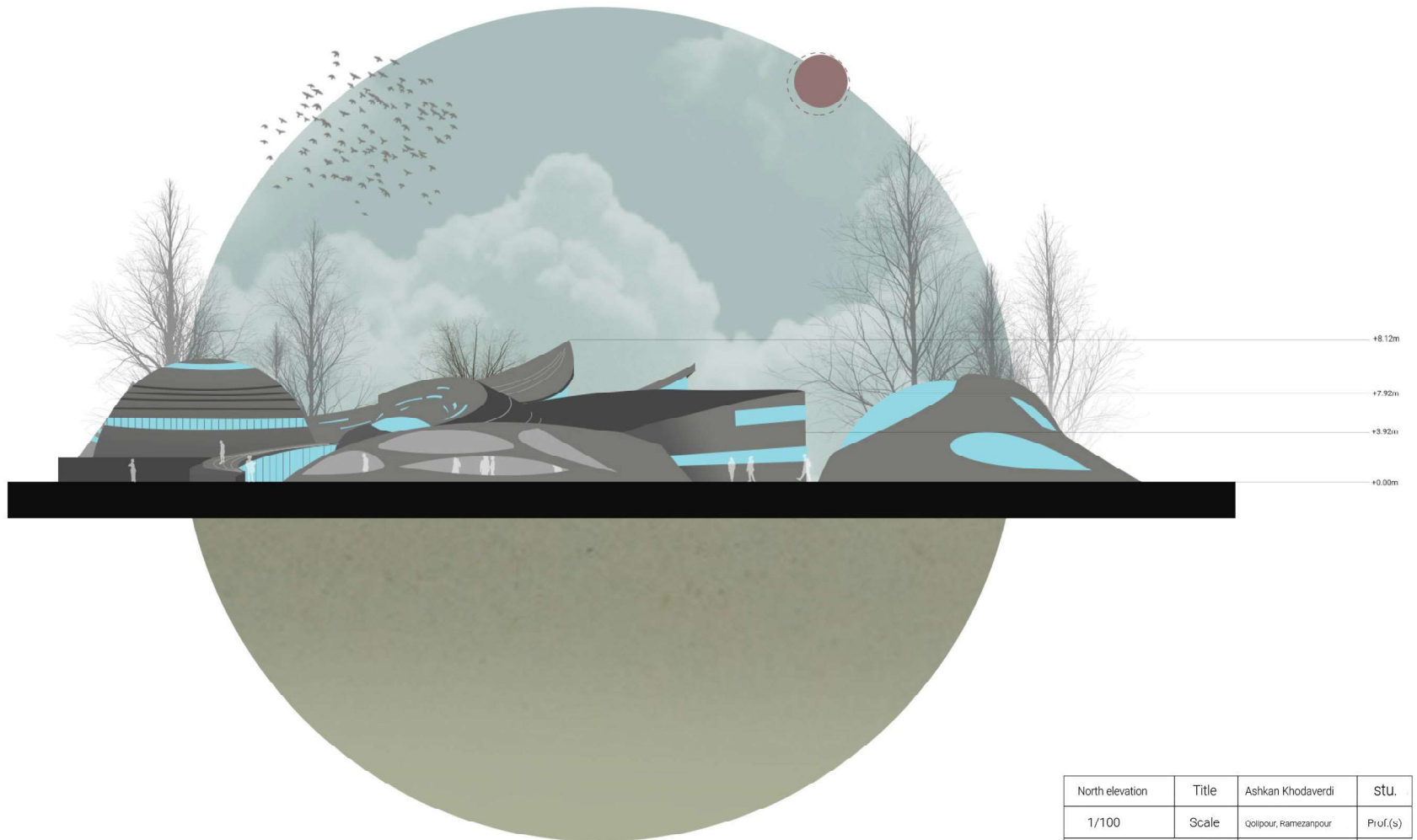
Galleries


Galleries

Directions in the Second part of the museum

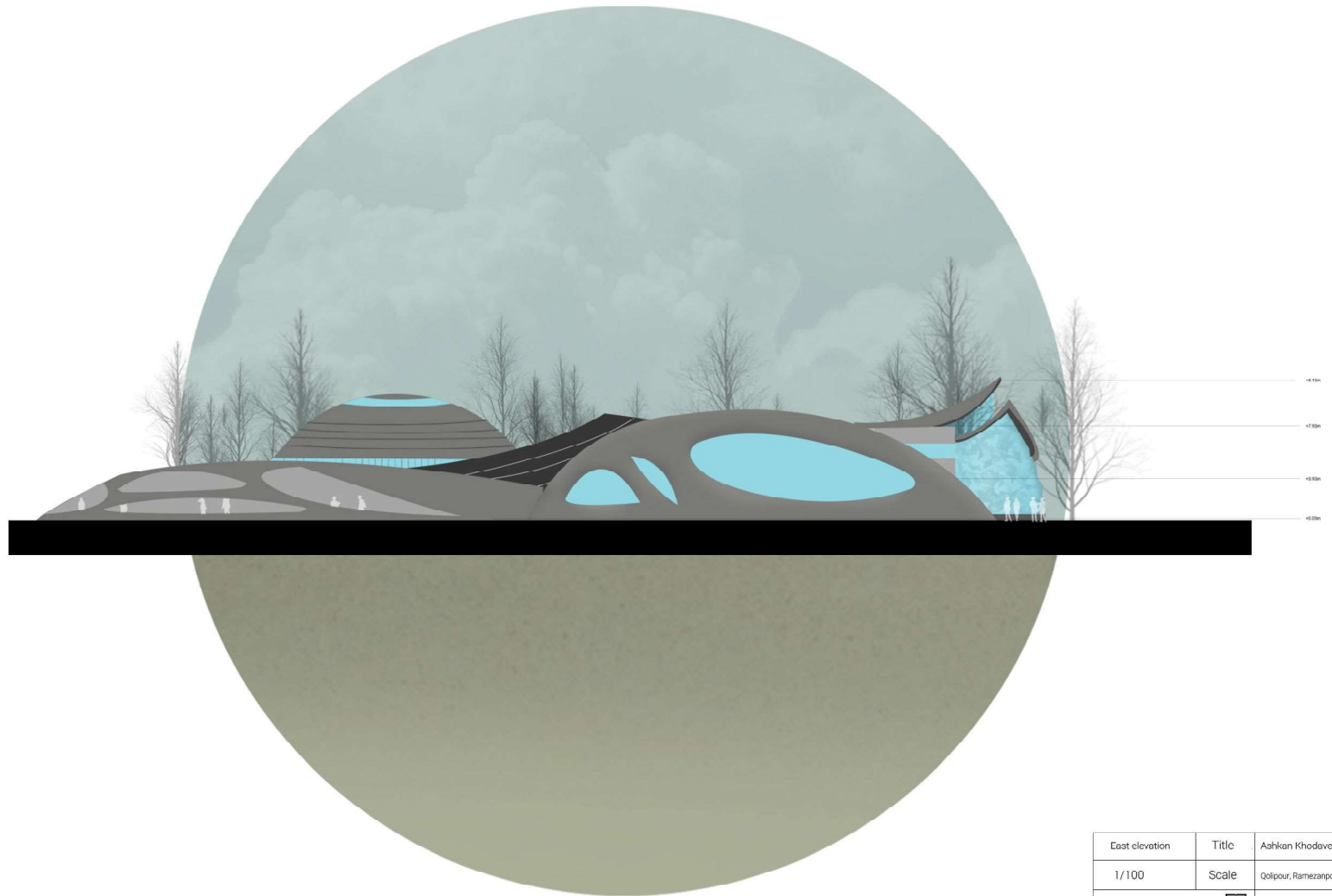



North elevation



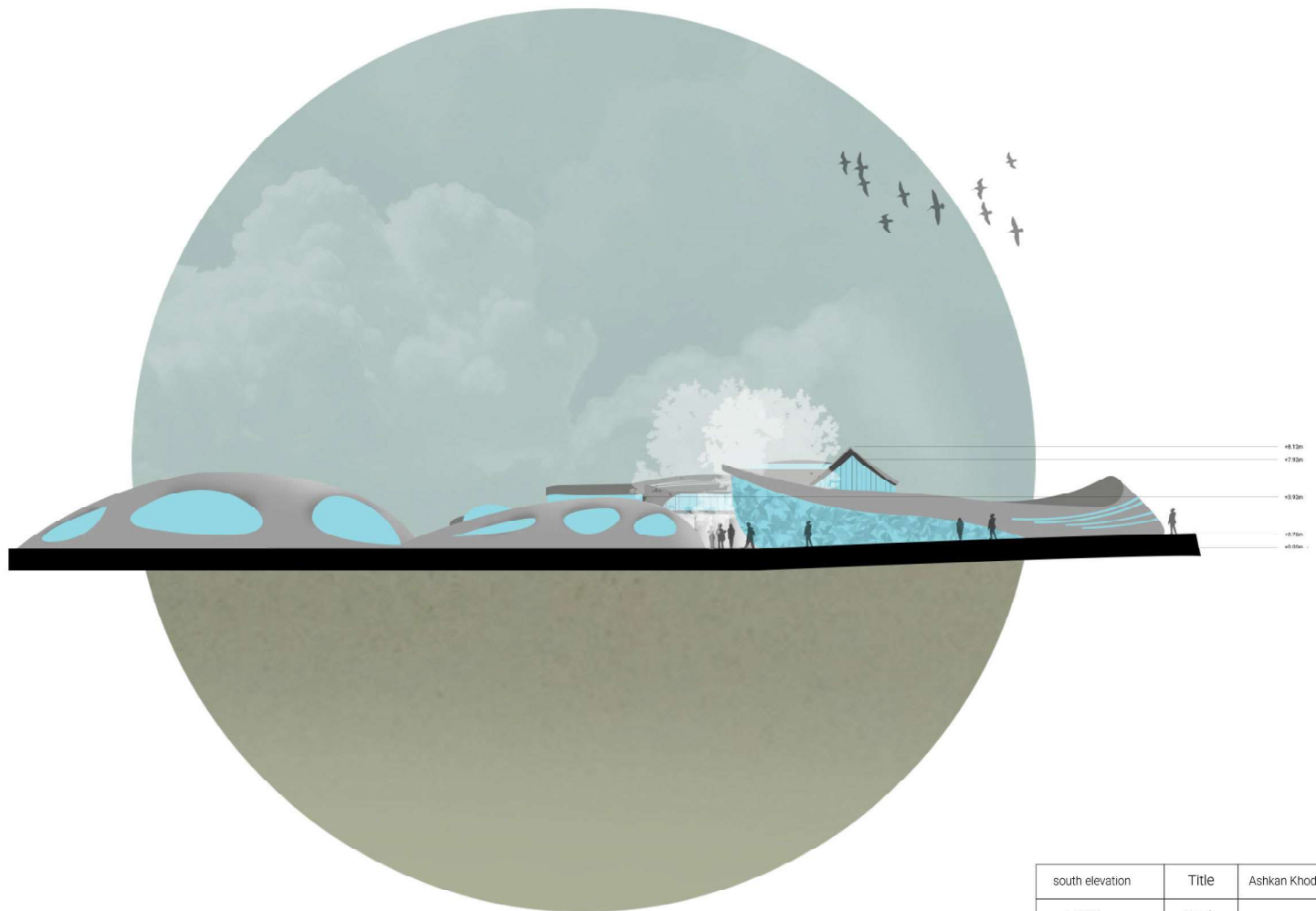
North elevation	Title	Ashkan Khodaverdi	STU.
1/100	Scale	qolipour, Ramezanpour	Pr of.(s)
University of Mazandaran			Architecture design 3


East elevation



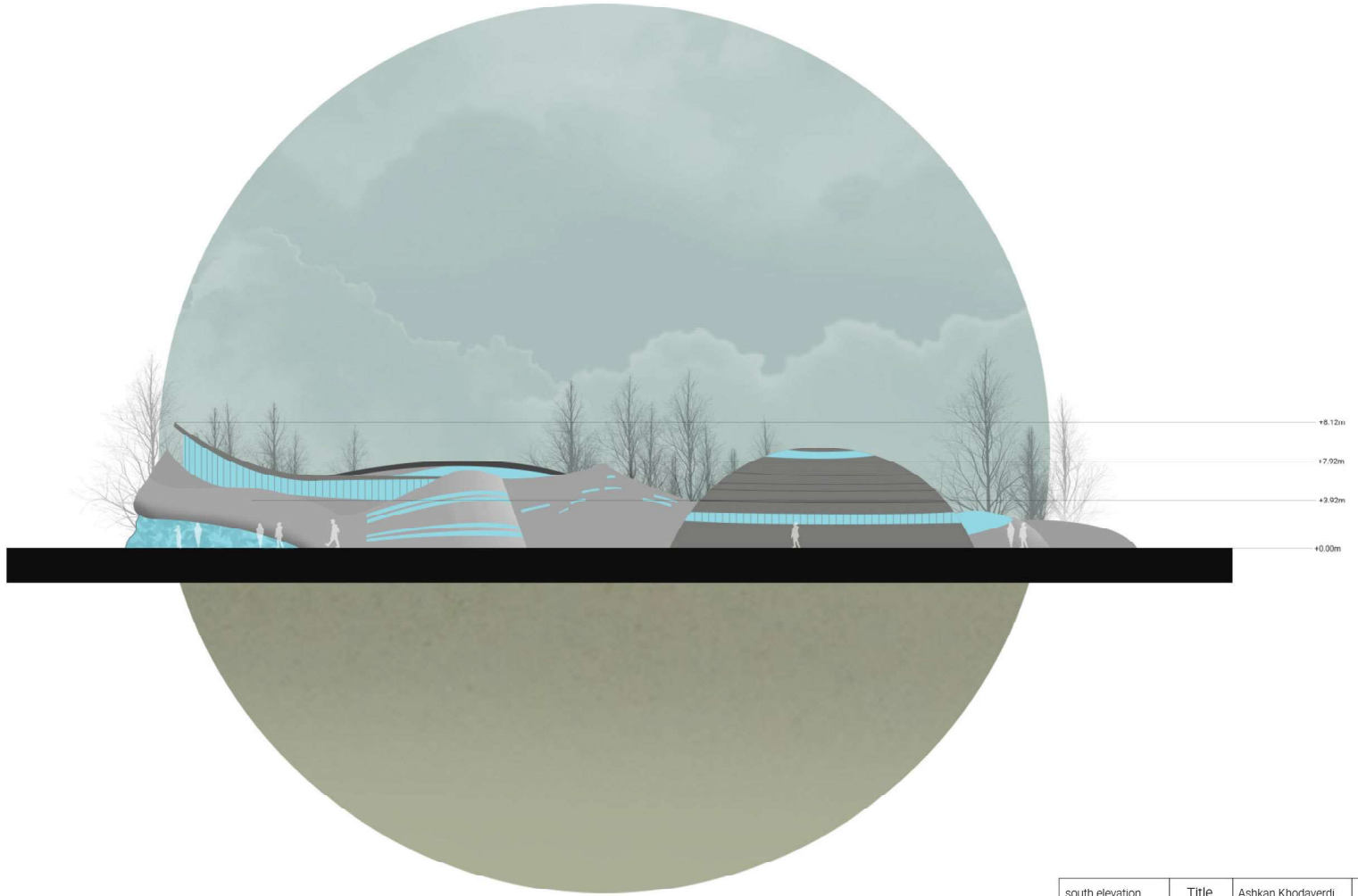
East elevation	Title	Ashkan Khodaverdi	stu.
1/100	Scale	Qolpour, Ramezanpour	Prof.(s)
University of Mazandaran		Architecture design 3	

south elevation



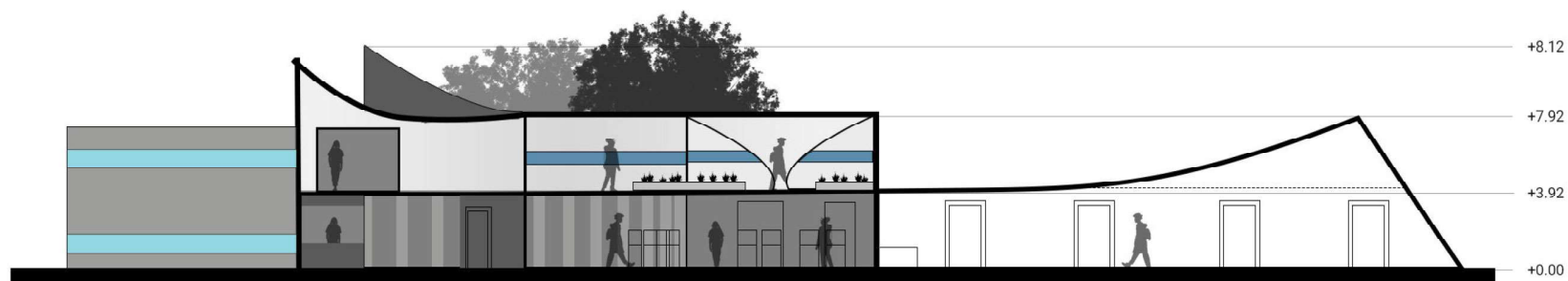
south elevation	Title	Ashkan Khodaverdi	STU.
1/100	Scale	Qolipour, Ramazanpour	Prof.(s)
University of Mazandaran		Architecture design 3	


West elevation



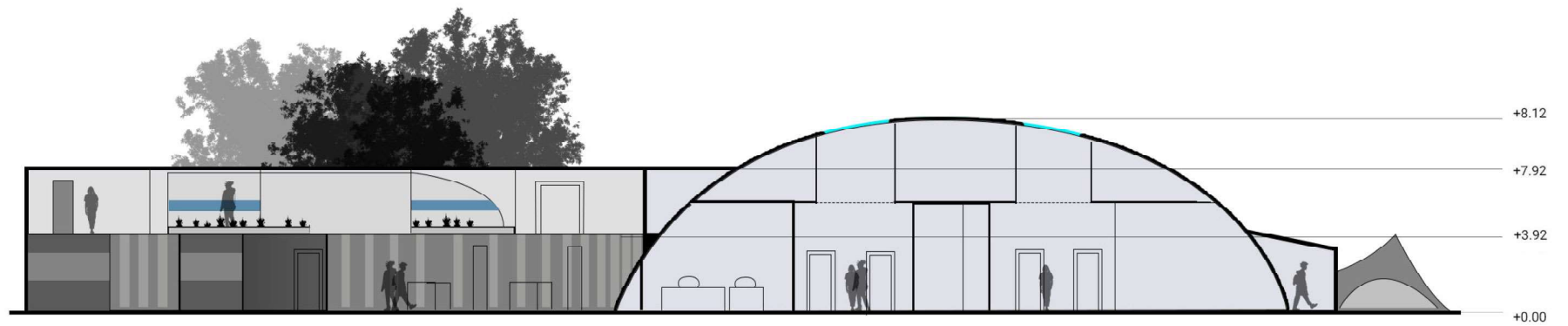
south elevation	Title	Ashkan Khodaverdi	STU.
1/100	Scale	Qolipour, Ramezanpour	Prof.(s)
University of Mazandaran		Architecture design 3	

A-A Section



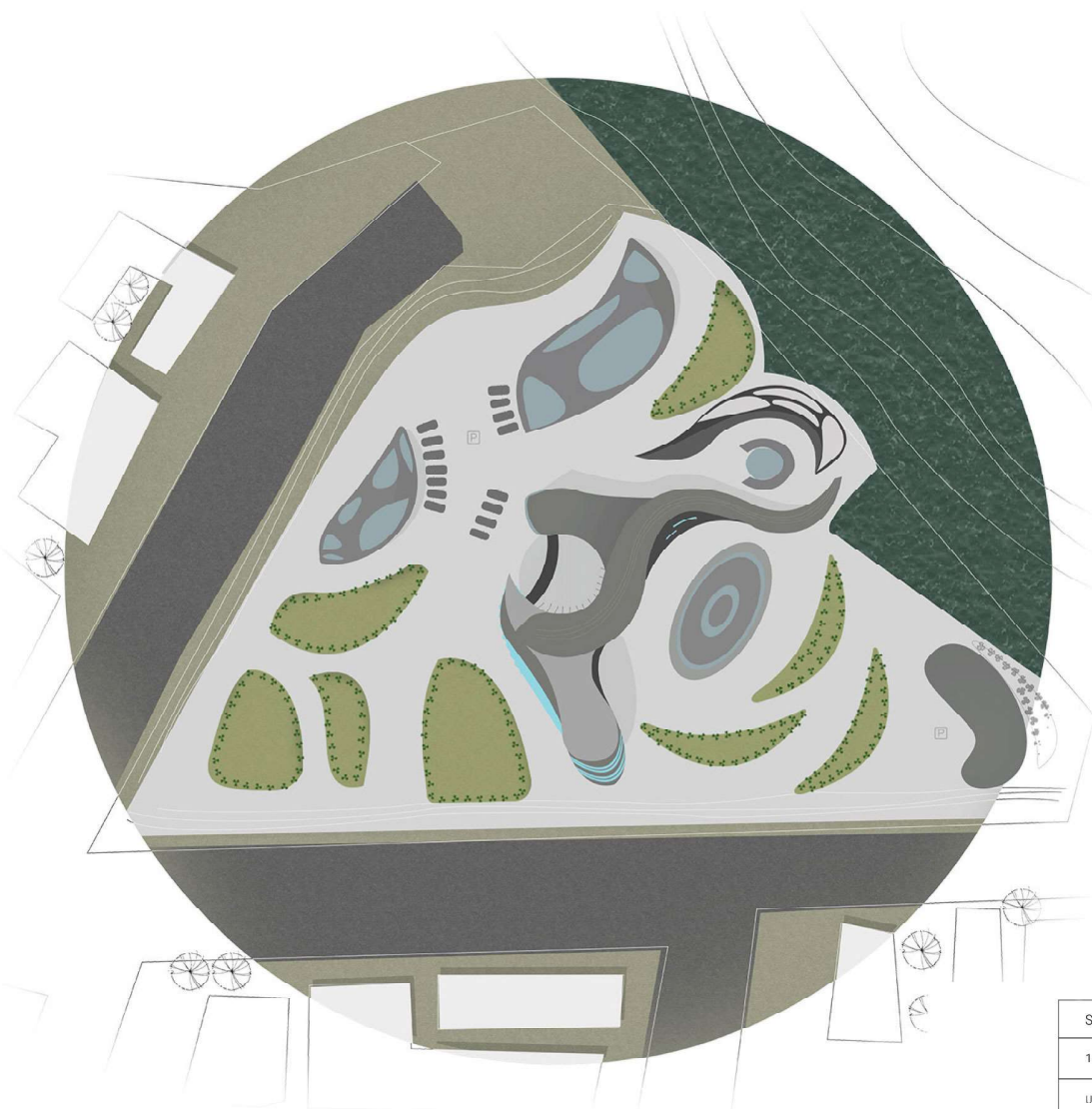
A-A section	Title	Ashkan Khodaverdi	STU.
1/100	Scale	قولی‌پوری، رام‌نعمانی‌پوری	Prof.(s)
University of Mazandaran		Architecture design 3	


B-B Section



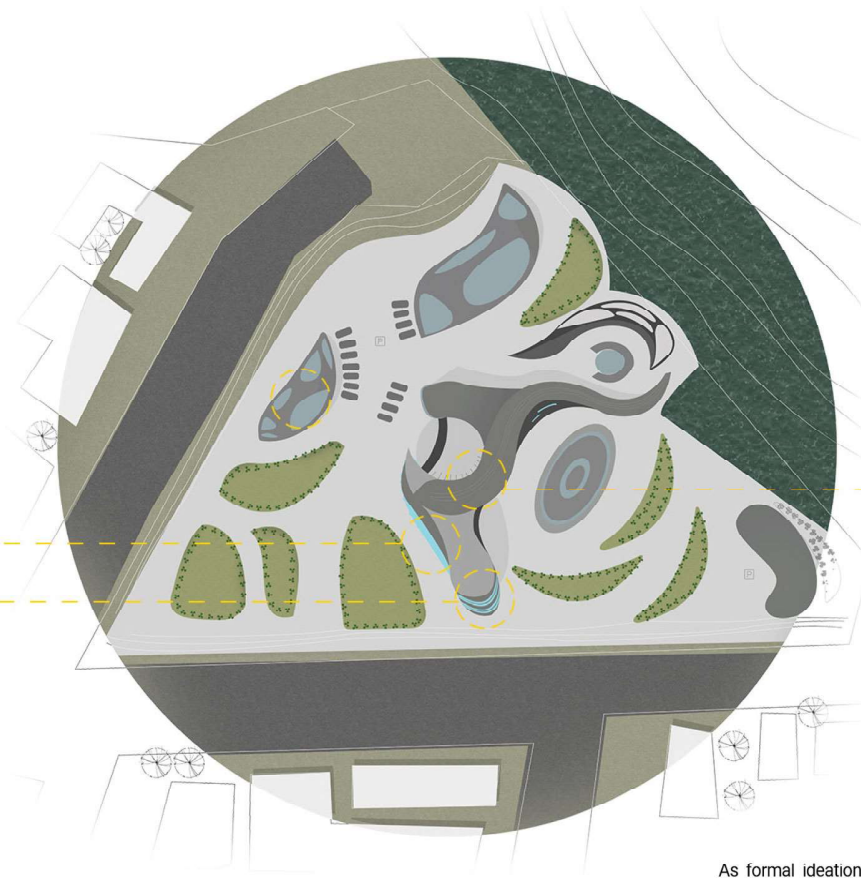
B-B section	Title	Ashkan Khodaverdi	STU.
1/100	Scale	قولی‌پور، رام‌نعمانی‌پور	Prof.(s)
University of Mazandaran		Architecture design 3	

Site plan



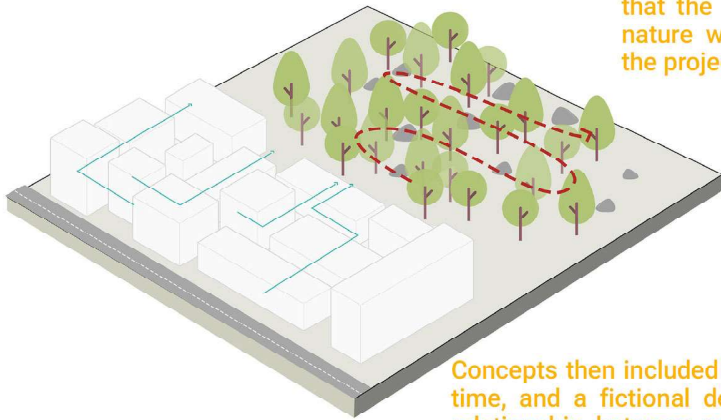
Site plan	Title	Ashkan Khodaverdi	STU.
1/200	Scale	Quilipuri, Ramnecanipuri	Prof.(s)
University of Mazandaran		Architecture design 3	

Concept

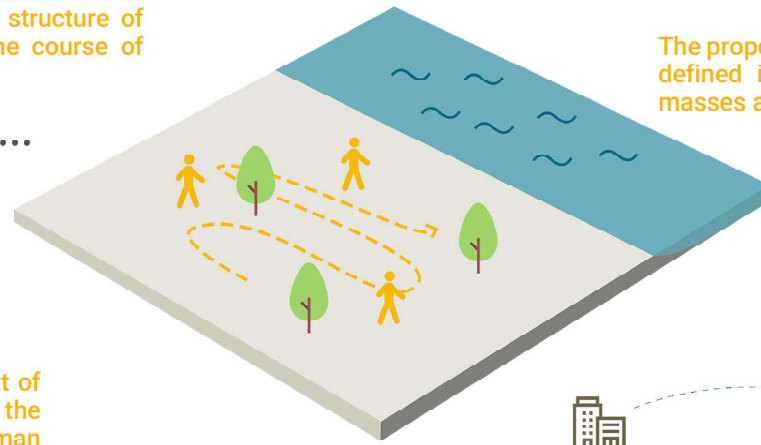


As formal ideation, subjects were added the design metaphorically without considering forms. The stretched lines on the roof reminds us of the connection between the sea and the land on the shore. Lines of windows on the building indicate the flowing lines of rivers on land. The blue glass that pulls itself out of the building and crawls down, like the water under the rocks, has secrets from the heart of the earth!

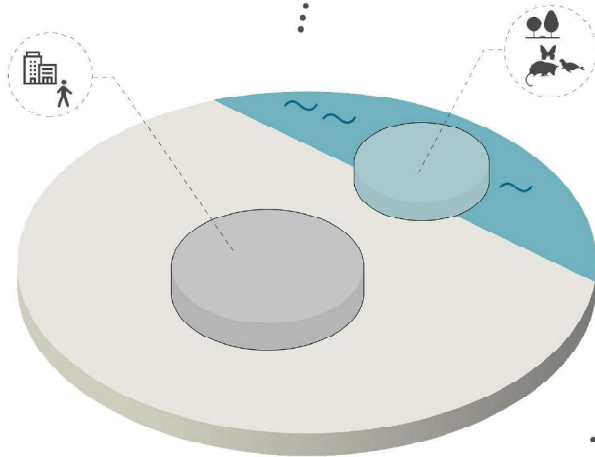
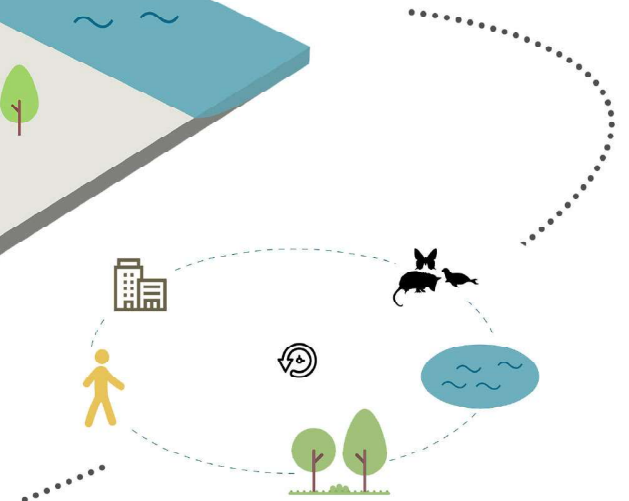
In the first stage, it was decided that the nature and structure of nature will shape the course of the project.



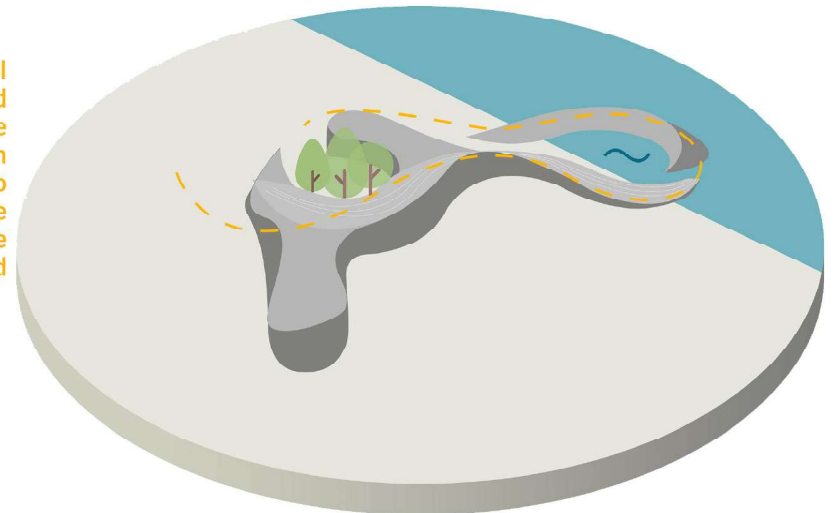
Concepts then included the element of time, and a fictional definition of the relationship between nature and man from the early years of the Industrial Revolution to a picture of the future was formed.



The properties considered are generally defined in the intermingle of natural masses and moving spaces.

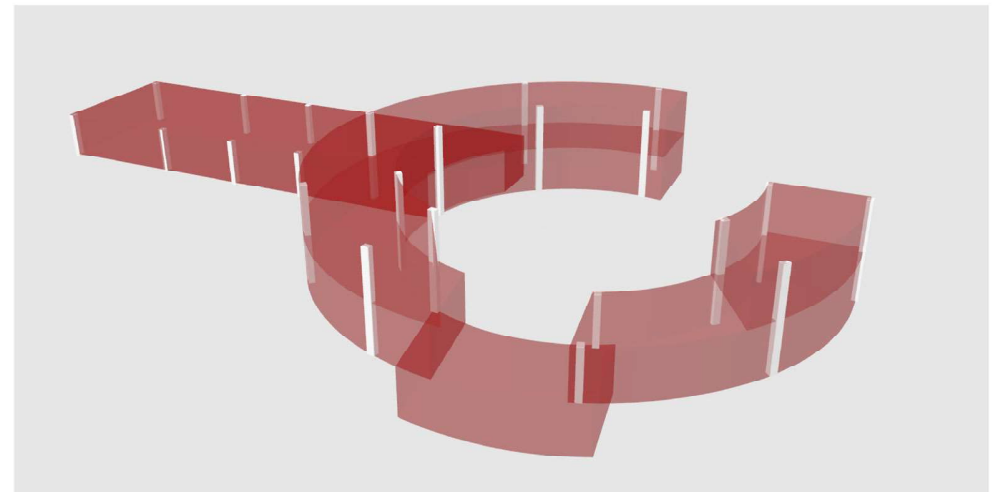
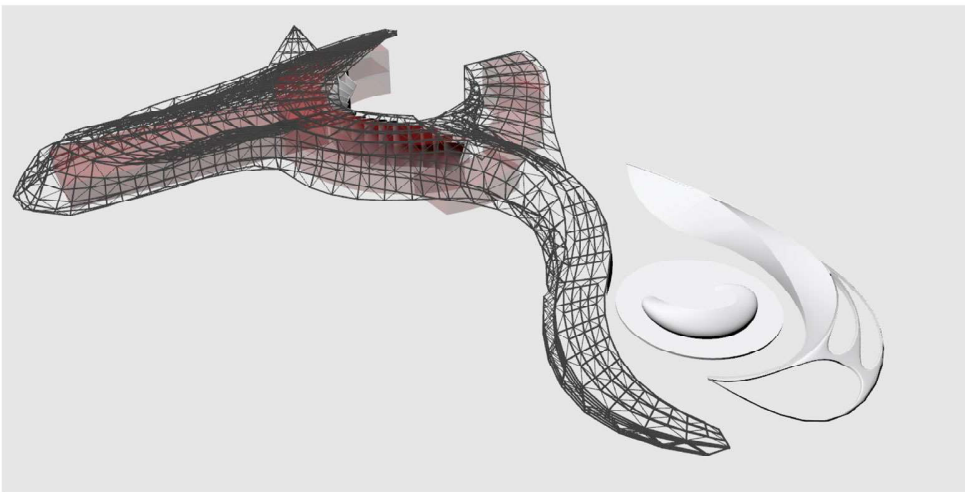
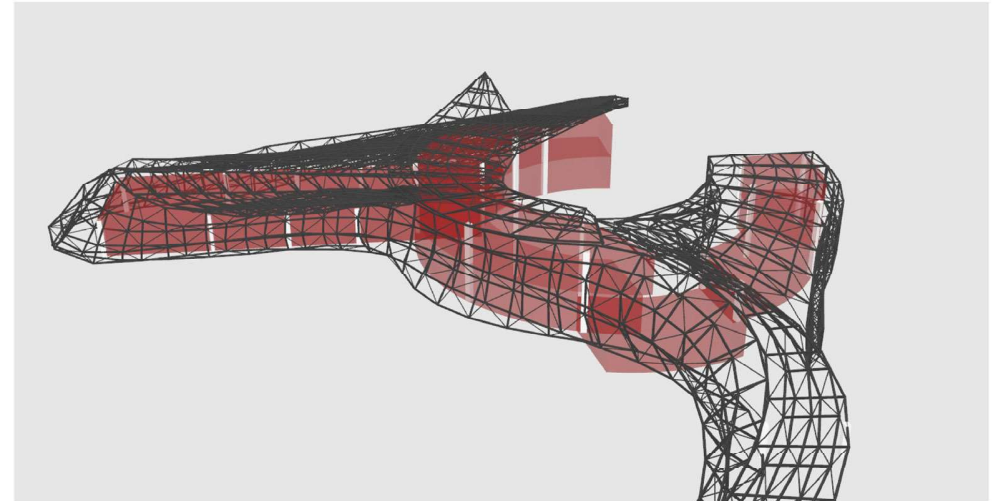
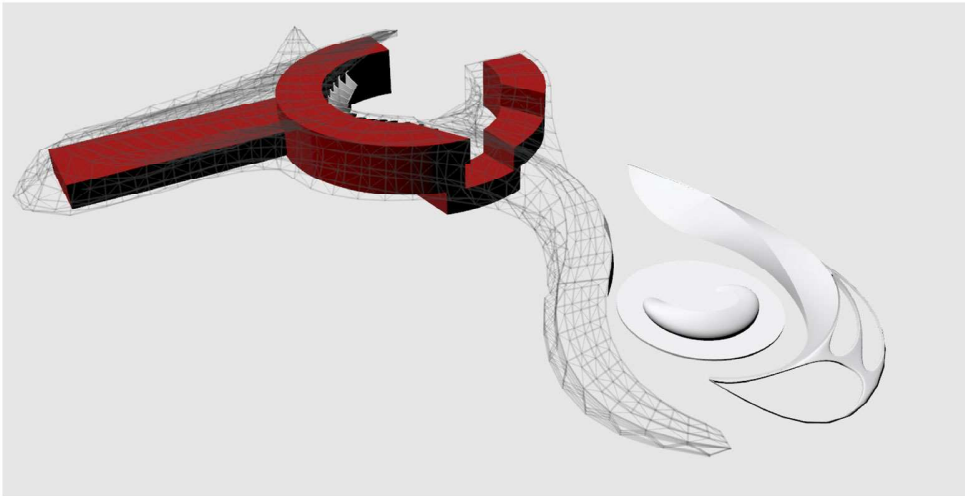


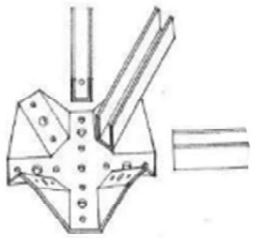
The circle was considered as a symbol of time, the sea with its immensity and purity as a symbol of nature and the coastal site as a symbol of human beings who have a strong desire to progress. Each was considered a circle for the sea and the site and were connected with the features obtained



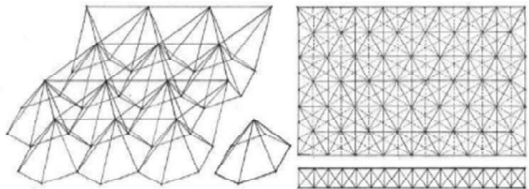
- Concrete structure (column and beam system)
- Spaceframe structure

The structure of the complex consists of two sections of concrete structure for the main sections of the galleries, the office section, the amphitheater and the library on the north side and the research and training section and the metal shell. The concrete structure, including beams, columns, and prestressed roofs, has been used to respond to larger and more complex openings. The outer metal shell uses a spaceframe structure.

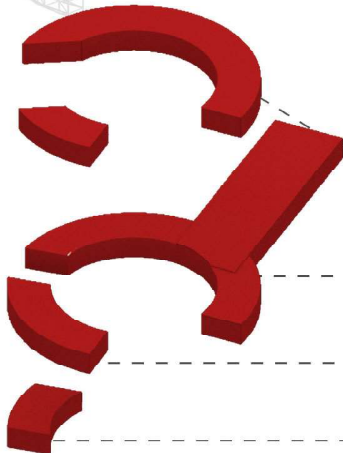
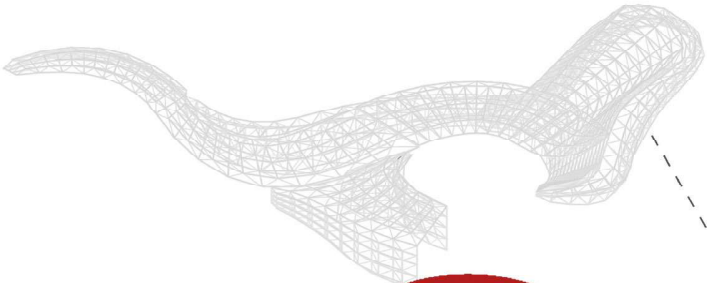
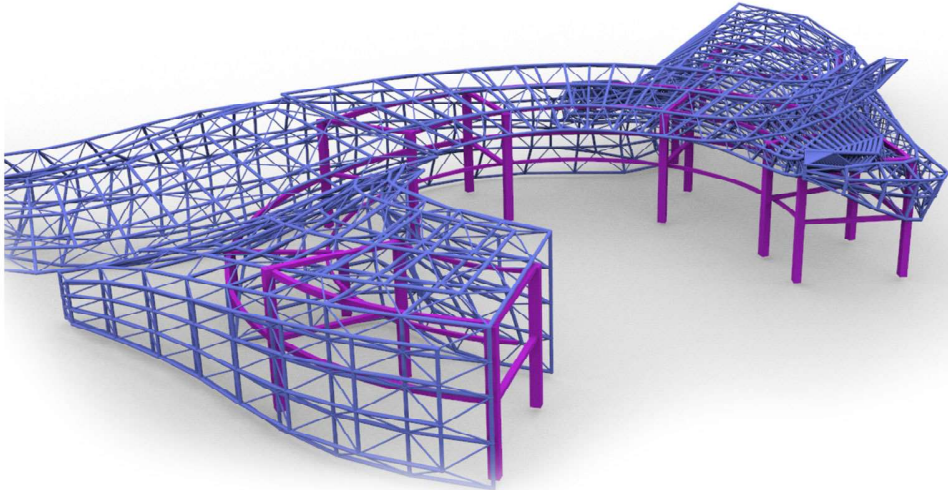




Connecting space structure components



Spaceframe structure consisting of metal tubes, a structure for connecting the shell



Spaceframe structure

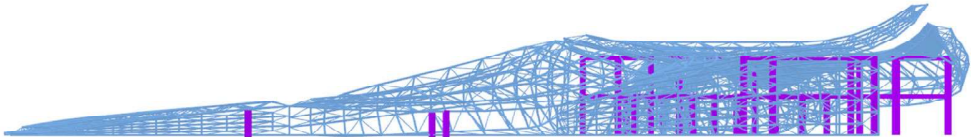
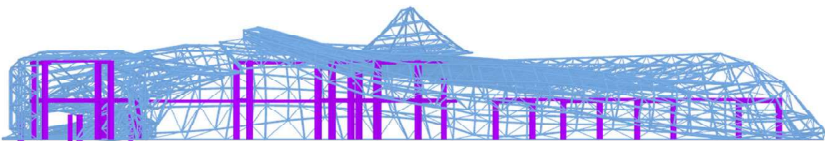
First floor

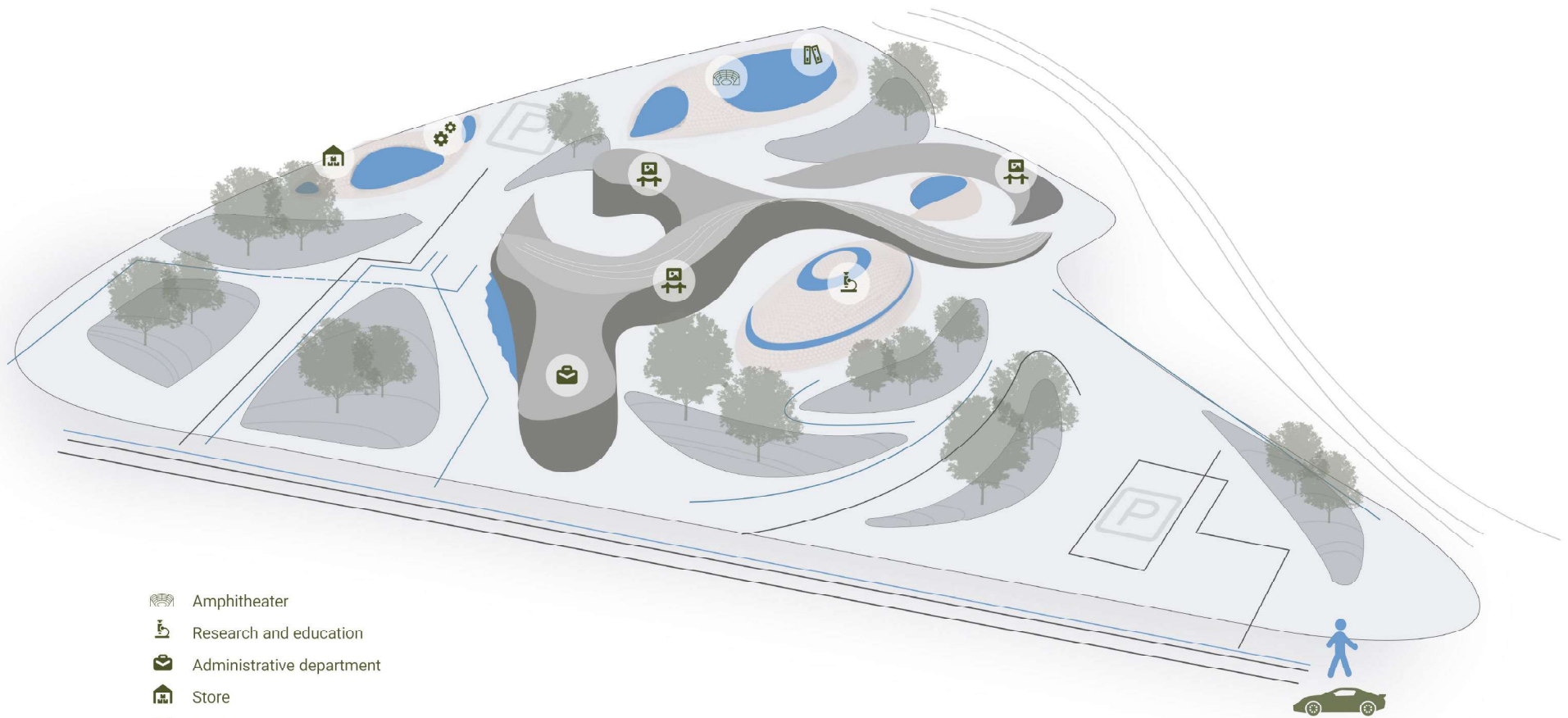
Ground floor








Below ground floor

Concrete structure (column and beam system)

Spaceframe structure





-  Amphitheater
-  Research and education
-  Administrative department
-  Store
-  Galleries
-  Library
-  Facilities